

FOR SALE

7.62 Acres of Vacant Land

Burkhart Road, Howell, Michigan

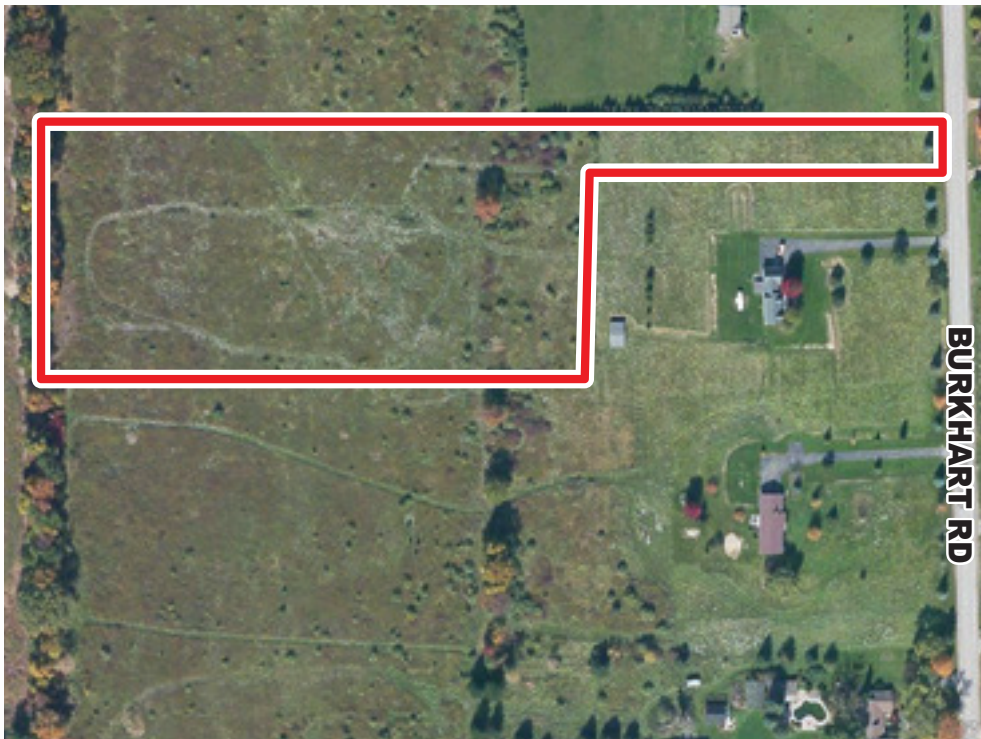
FOR DETAILS CONTACT

JOHN DINSMORE

john.dinsmore@lee-associates.com

(810) 923-9106

www.LEE-ASSOCIATES.com



PROPERTY FEATURES

- 7.62 Secluded Acres on Burkhart Road North of Warner Road
- North of Grand River
- Howell Township, Livingston County
- All Utilities
- Pricing Includes Sewer & Water REU's
- Zoned AR - Agriculture Residential
- Easy access to I-96 via Burkhart Road



26211 Central Park Blvd., Suite 612 | Southfield, Michigan 48076

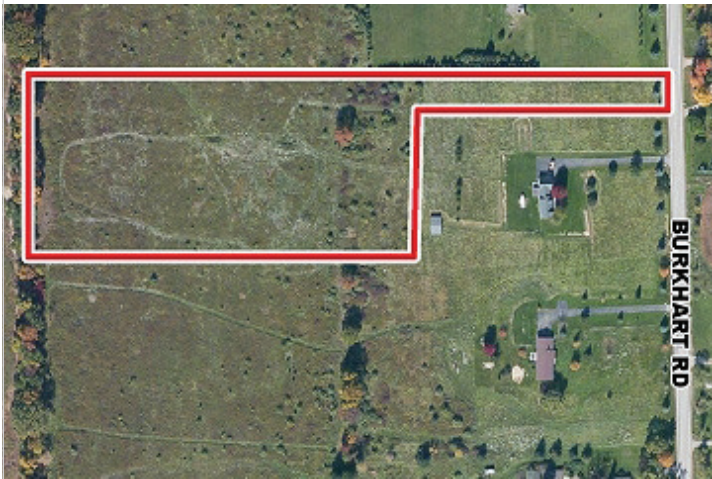
No warranty or representation is made to the accuracy of the foregoing information. Terms of sale or lease and availability are subject to change or withdrawal without notice.

LOCAL EXPERTISE. NATIONAL REACH. WORLD CLASS.



COMMERCIAL REAL ESTATE SERVICES

7.62 ac Burkhart Road
 Burkhart Rd., Howell, MI 48855



Property Type: Land
Available Acres: 7.62
Market: SE Michigan
Submarket: Livingston
Micromarket/Node:
County: Livingston
Business Park:

Availability Details

Available Acres:	7.62	Transaction Type:	Sale
Available SF:	331,927		
Asking Price (\$):	\$73,626		
	\$9,662.20 PER AC		

Comments

Availability Comments: 7.62 acres located on the west side of Burkhart Road, just north of Warner Road. Water & Sewer available. Zoned AR - Agriculture Residential. Price includes 16 Sanitary Sewer REU's and 16 Water REU's. Purchaser to assume remaining sewer (#11) bond (\$45,732.00) and water (#11) bond (\$16,420.00) payments in annual installments thru 2026 @ 5.34% interest.

Site		
Parcel Number:	4706-17-400-029	Buildable SF:
Legal Description:		Development Capacity:
Lot Dimensions (LxW):		Zoning: AR/Residential
Site Shape: Irregular		Primary Use: Residential
Spec/BTS:		Secondary Use: Agricultural
Floodplain:		Access:
Density: 0%		Visibility:
Permitted SF:		Frontage:
Permitted FAR:		
Rail Status:		
Rail Line:		
Topography:		
Easement:		
Land Condition:		
Structure on Site: No		
Min Divisible Structure SF:		
Max Contiguous Structure SF:		
Additional Site/Parcel Information Comments:		
Frontage Traffic Count Comments:		

Utilities		
Gas: Natural	Power:	Phone:
Water: City	Amps:	Cable:
Sewer: City	Volts:	Broadband:
	Phase:	Broadband Supplier:
	Power Supplier: DTE	
Utility Comments: 16 Sanitary Sewer REU's 16 Water REU's		

Contacts for this Availability				
Role	Company	Name	Phone	Email
Listing Broker	Lee & Associates of MI	John Dinsmore	810.923.9106	john.dinsmore@lee-associates.com

